

Figure 11.1. *Martian shield volcano, Olympus Mons. The summit caldera is about 80 km in diameter. (Viking MDIM mosaic 211-5360)*



Figure 11.5. Apollinaris Patena and surrounding region centered at 10° S, 190° W. (Viking MDIM Volume 4.)

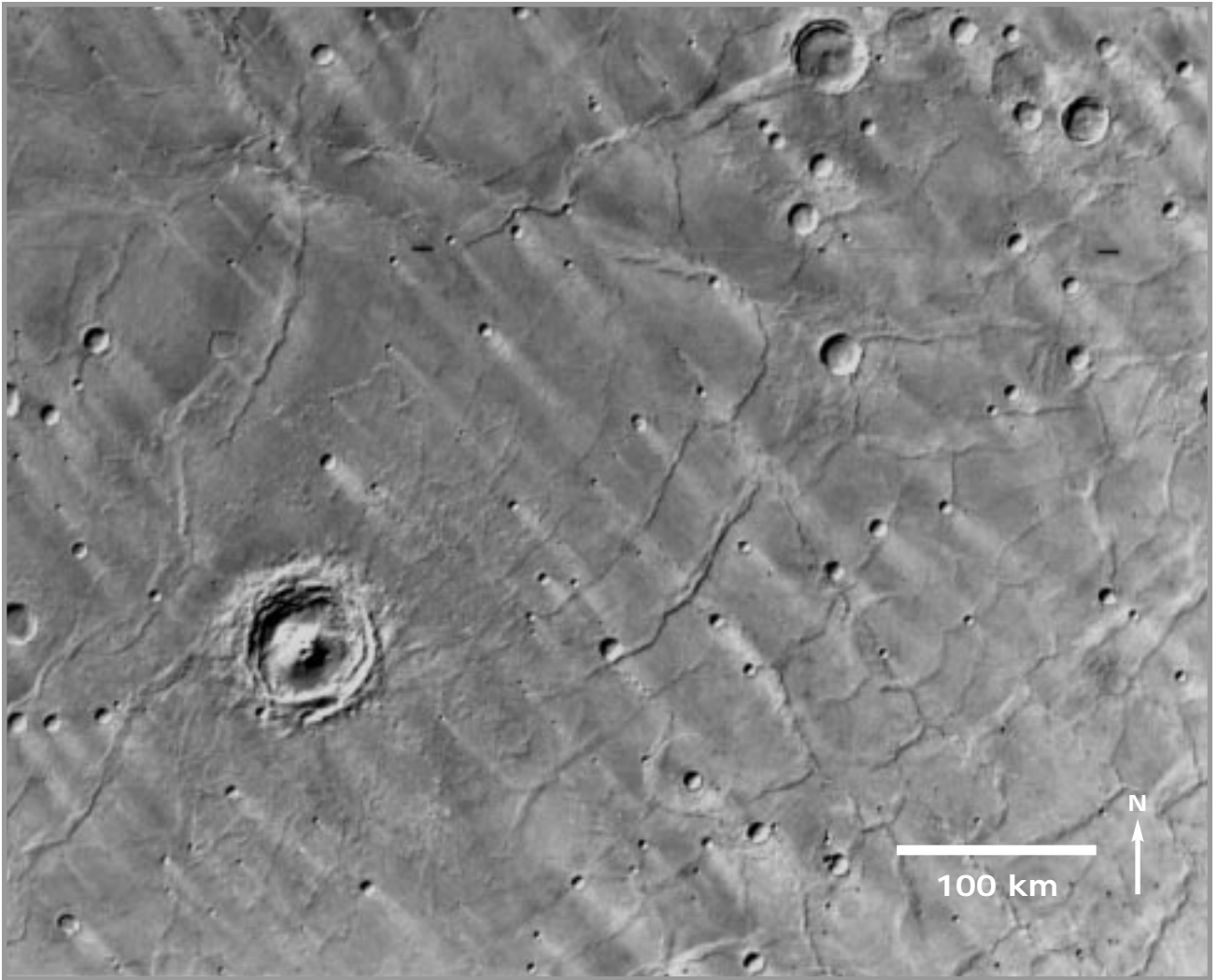


Figure 11.4. Hesperia Planum, showing bright windstreaks associated with some of the craters. Location: 24° S, 245° W. North is to the top. (Viking MDIM Volume 4.)

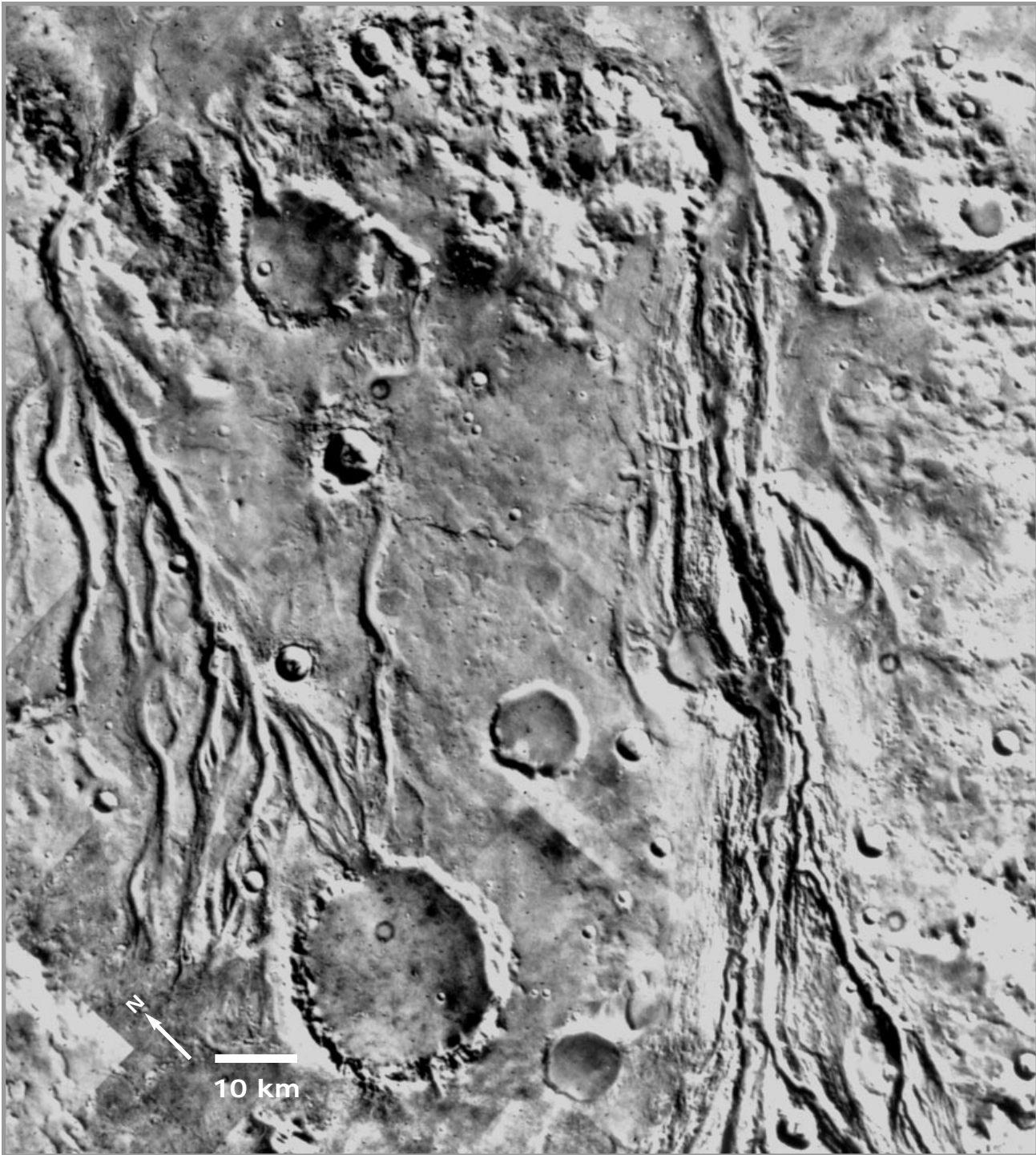


Figure 11.3. Valleys on western Chryse Planitia near the Viking Lander 1 site. The large crater at left center is 28 km in diameter. (Viking mosaic P-17698.)

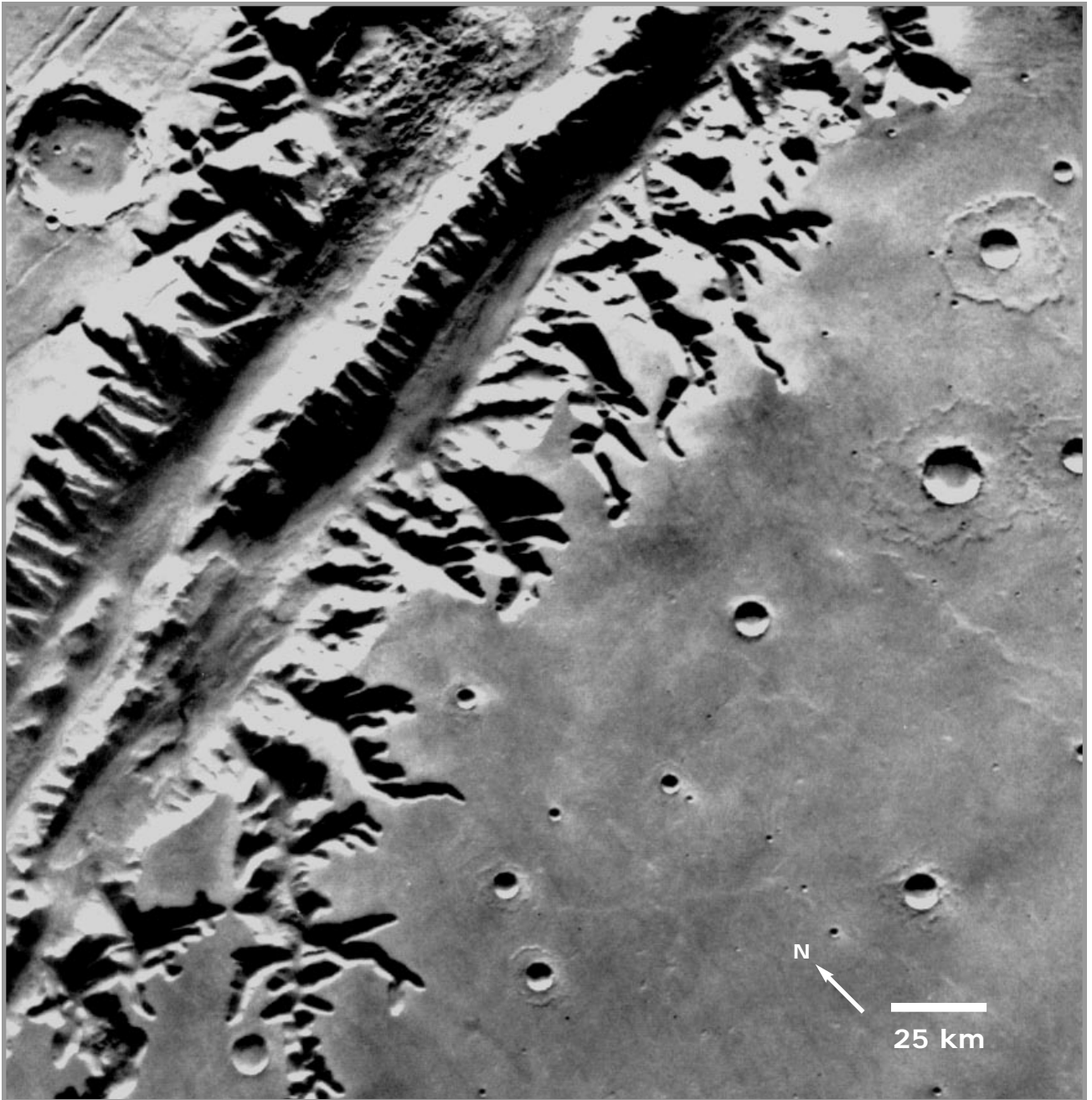


Figure 11.2. Ius Chasma, part of the Valles Marineris system. (Viking image 645A57.)